

HOW TO FIND GOLD NEAR YOU USING AI MAPS



*A Practical Introduction to Gold Prospecting
Using Geological Data*

Aurum Meum AI Academy

How to Find Gold Near You Using AI Maps

A Practical Introduction to Gold Prospecting Using Real Geological Data

Aurum Meum AI Academy

AurumMeum.com

THE TRUTH ABOUT GOLD: MOST PEOPLE ARE LOOKING IN THE WRONG PLACES

Gold isn't rare.

👉 It's just misunderstood.

Most prospectors fail because they:

- **Start in random ground**
- **Ignore geology completely**
- **Chase guesses instead of patterns**

Gold forms in predictable geological systems — not randomly across the landscape.

👉 If those systems aren't there... neither is the gold. No exceptions.

👉 This is why most people spend years prospecting... and never find gold consistently.

The Goal: The goal of modern prospecting is simple:

Start where gold already has the highest probability of existing

THE PROBLEM MOST PROSPECTORS FACE: Most People Start Backwards

Many prospectors:

- Buy equipment first
- Travel without a plan
- Choose locations based on guesswork

This leads to:

- Wasted time
- Wasted fuel
- Frustration

What's Missing

What most people don't have is:

A targeting system based on geology

THE SYSTEM (WHAT ACTUALLY MATTERS): Gold Leaves Clues

Gold systems leave behind patterns you can identify:

1. Structure

Faults, fractures, and shear zones act as pathways for gold-bearing fluids.

2. Hydrology

Water moves and concentrates gold into streams, basins, and placer systems.

3. Known Deposits

Historic gold locations (like MRDS points) show where gold has already been found.

4. Terrain & Geology

Certain rock types and environments are more favorable for gold formation.

When These Align...

The probability of finding gold increases significantly

EXAMPLE MAP: How to Read the Map

This system combines multiple layers:

- Gold Deposit Points (MRDS)
- Hydro Basins / Drainages
- Structural Indicators
- AI Interpretation Layer

What You're Looking For

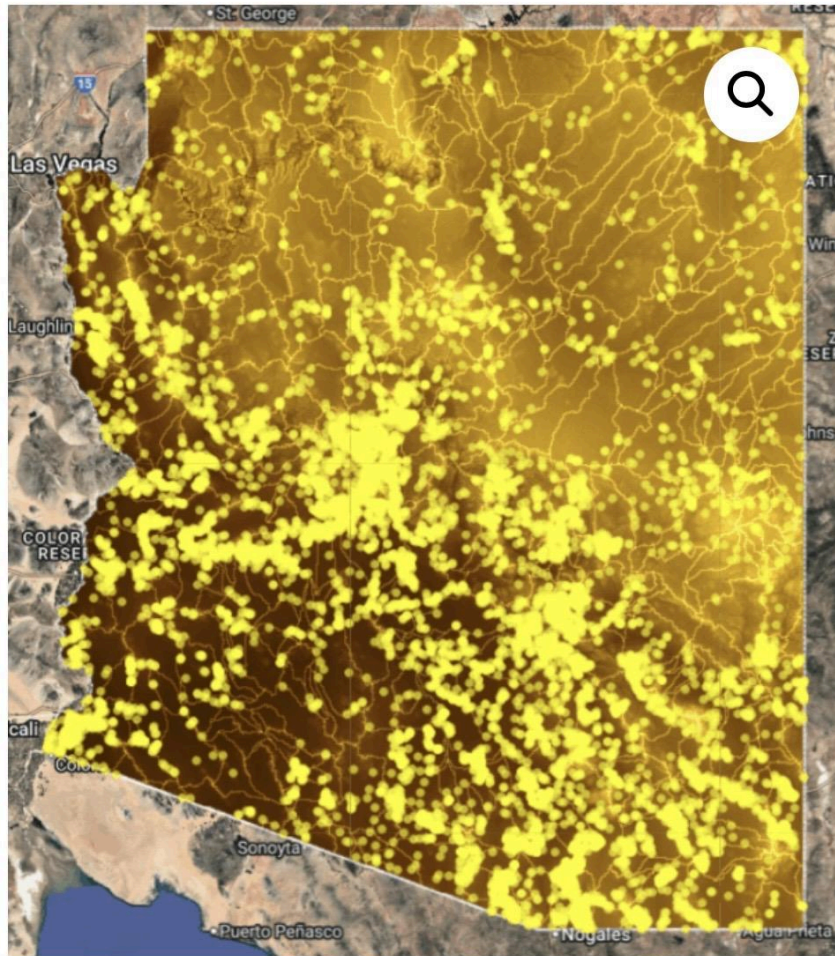
- Gold deposits exist nearby
- Water systems intersect those deposits
- Structure supports fluid flow

👉 These intersections are where prospectors should focus first

WHAT THIS MEANS IN THE FIELD: You Are Not Searching Blindly

Instead of wandering random ground, you are:

- Starting with better locations
- Following geological logic
- Reducing wasted time



This is an example of a real gold targeting map.

At first glance, it looks complex.

But once you understand what you're seeing...

👉 it becomes obvious where to start.

How to Read This Map

This system combines multiple layers of real geological data:

- Gold Deposit Points (MRDS)
 - 👉 Where gold has already been found
 - Water Systems (Hydrology)
 - 👉 Where gold is transported and concentrated
 - Structural Features
 - 👉 Faults and pathways where gold-bearing fluids moved
 - AI Interpretation Layer
 - 👉 Highlights areas where these systems align
-

What You're Actually Looking For

You are NOT looking at everything.

👉 You are looking for overlap.

Specifically:

- Gold deposits nearby
- Water systems intersecting those deposits
- Structural pathways supporting fluid flow

👉 When these align... probability increases significantly

The Key Insight Most People Miss

Most prospectors look at one thing at a time.

- Just a river
- Just a gold point
- Just a random area

👉 That doesn't work.

👉 Gold is found where systems intersect — not in isolation.

How This Changes Your Prospecting

Instead of:

- Driving around randomly
- Testing ground blindly
- Hoping for luck

You are now:

- Starting in high-probability zones
 - Following geological logic
 - Eliminating wasted ground
-

Why This Matters

👉 You don't need to search everywhere.

👉 You need to start in the right places.

Important

This is just an example.

👉 Your area has different geology, structures, and gold potential.

Which Means...

To actually use this in the field, you need:

- A map specific to your location
- A breakdown of what matters in your terrain

This Changes Everything

Instead of asking:

“Where should I go?”

You start asking:

“Where does the geology support gold?”

IMPORTANT: This Was a Sample

This report shows how the system works

But:

Your area has different geology, structure, and gold potential

That Means...

To actually use this in the field, you need:

👉 A report specific to YOUR location

👉 A map that shows YOUR terrain

Get Your Custom Gold Report for Your Area

Based on your location or state, this report will:

- Show where gold is more likely
- Use real geological data
- Help you start near home
- Reduce time spent on poor ground

What You'll Receive

- Where gold is most likely in your area
- The terrain and structures that control it
- Clear starting locations (not guesswork)
- A plan you can actually use in the field

Start Finding Gold Near You Today

👉 Get Your Custom Gold Report — \$7

Every trip into the field costs time and money — start in the right place first.

Most areas contain little to no gold — start in the right place first.

👉 You don't need more gear. You need better starting points.

Start Smarter

Gold prospecting is not about luck.

It is about:

- Understanding geology
- Using better tools
- Starting in the right place

Start near home. Follow the geology and find more Gold.